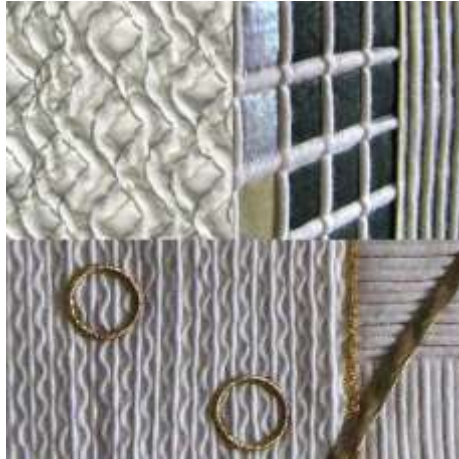


**WORKSHOP LED BY PAULINE BARNES
WEDNESDAY 4TH JULY 2018 10.00 AM - 3.45 PM
AT PERDISWELL YOUNG PEOPLE'S LEISURE CLUB WR3 7SN**

Twin Needle Magic

Outline of Workshop

If you don't know what your twin needle is for, then this workshop is an eye-opener! You will explore different techniques using twin needles and go home with lots of samples to inspire you.



Requirements

Participants will need to bring the following items:

- Sewing machine (and manual) with normal sewing foot, embroidery/darning foot, pin tuck foot and, if you have one, an open-toe applique foot
- If you have a second machine which you bring to workshops because it is lightweight, please bring your main machine and not the lightweight one!
- Small selection of machine threads to include normal sewing thread (such as Gutermann poly or cotton), variegated, metallic, rayon etc.
- Machine needles - Universal size 80/12, and *Twin needles - 3mm or 4mm needle and any other sizes if you have them
- Several pieces of plain fabric such as calico or PLAIN patchwork cotton cut into pieces approx. A4 size or smaller
- Fat quarter of Scollata fabric

Note

Pauline will have for sale, if needed, all sizes of twin needles and Scollata which is a cream fine cotton fabric obtainable from Whaleys of Bradford